



**DESIGNERS, FABRICATORS AND ERECTORS OF
PAPER SCRAP REMOVAL SYSTEMS**

AIRCON CORPORATION
P.O. BOX 80446 MEMPHIS, TN 38108-0446
(901) 452-0230 • (901) 452-0264 FAX

E-MAIL: GENERAL@AIRCON-CORPORATION.COM / WWW.AIRCON-CORPORATION.COM



GRADE SEPARATION



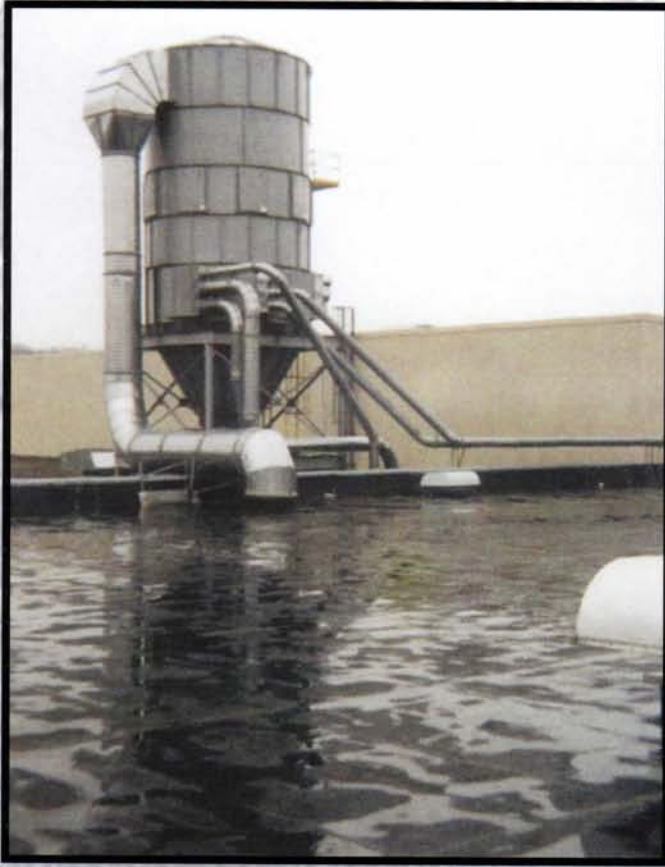
Rain, sleet, snow, and ice may not be a problem for mail delivery, but wintertime adversities multiply maintenance hours. Aircon has innovated the formerly unmanageable into an indoor, user-friendly environment.



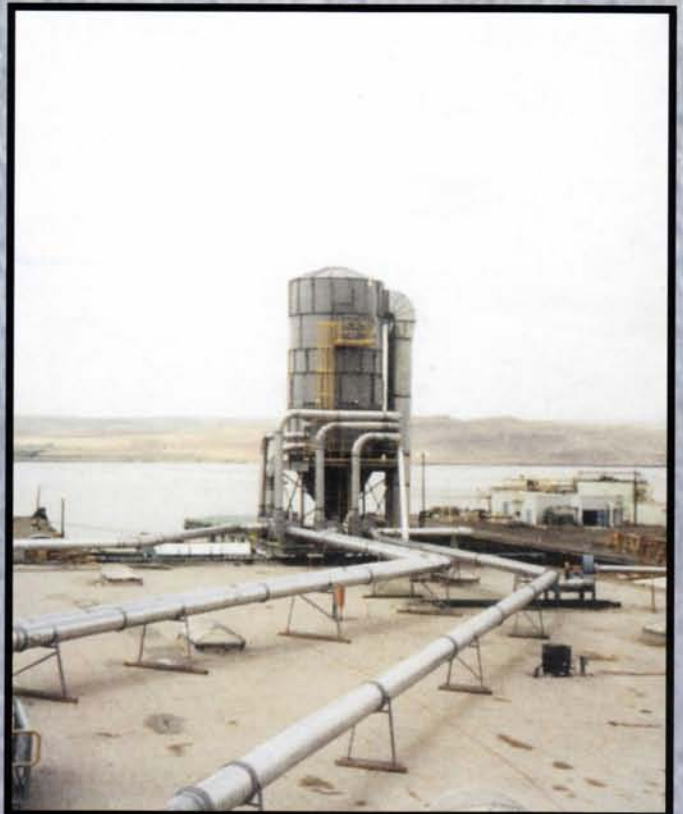
Examples of Aircon bale accumulation systems, PLC's, sequence valves, and floorsweeps are found in all parts of the country. Our new line of scrap separators and below-roof filters translate Aircon expertise into years of worry-free operation.



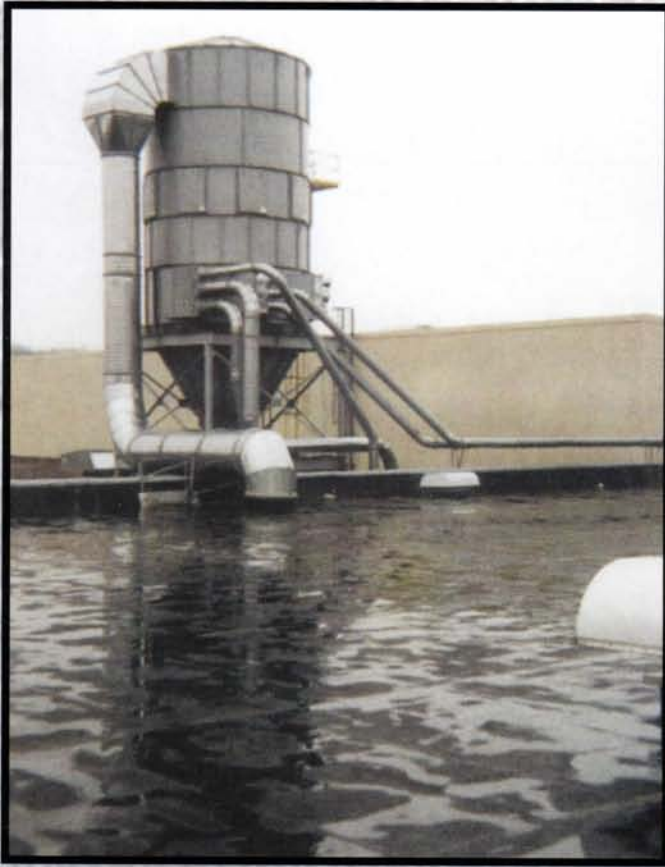
FILTERED RETURN AIR SYSTEMS



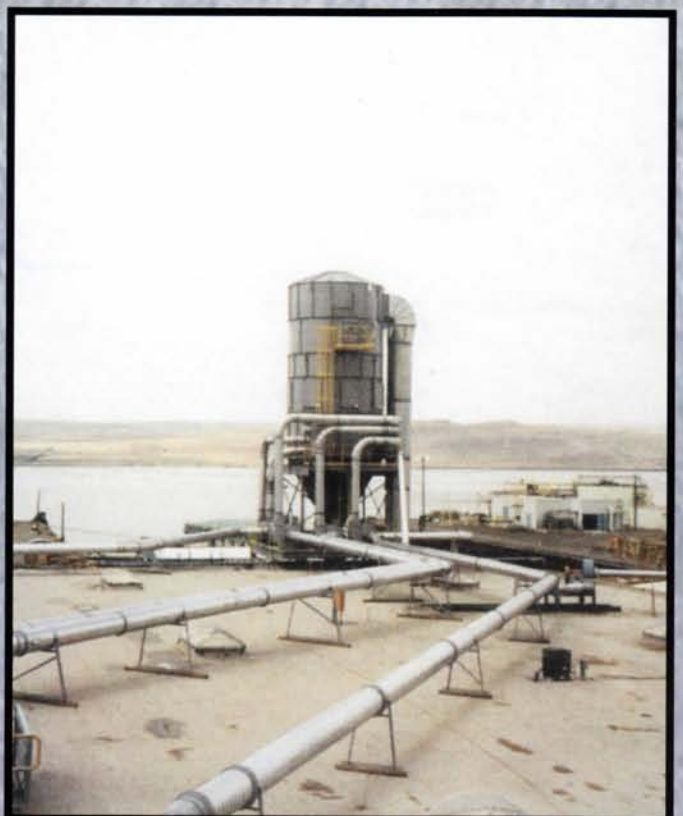
Multiple system RA (reverse air cleaned) baghouses have capacities up to 100,000 cfm, servicing a diversity of paper products and industries. Aircon filters define a region extending from a newspaper insert printer in Pennsylvania to a corrugated operation in Washington.



FILTERED RETURN AIR SYSTEMS



Multiple system RA (reverse air cleaned) baghouses have capacities up to 100,000 cfm, servicing a diversity of paper products and industries. Aircon filters define a region extending from a newspaper insert printer in Pennsylvania to a corrugated operation in Washington.



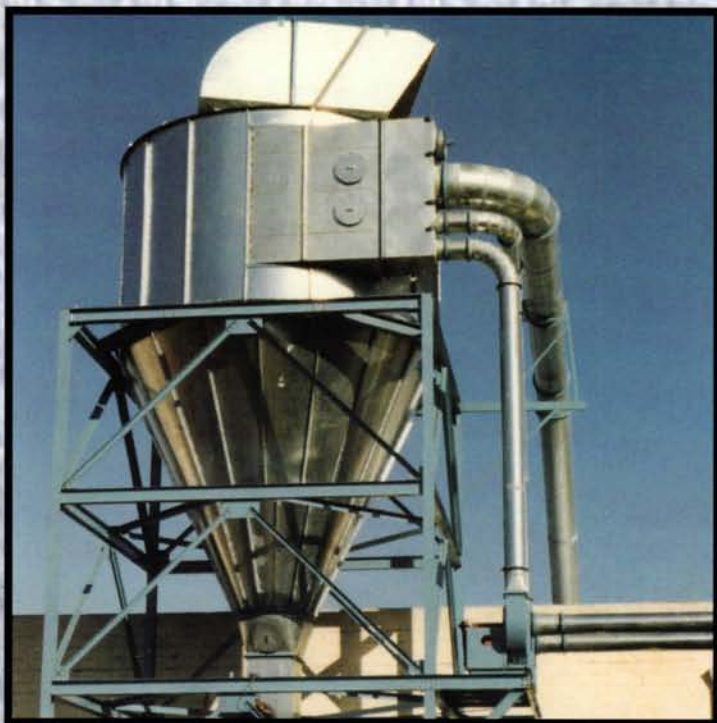
CONTAINER - FOLDING CARTON - CORRUGATED



Everything but the electricity... complete Aircon turnkey systems, like this one for a specialty carton plant in Kansas, took care of everything from the structural steel to the smallest photoelectric bale sensor.

Whether a single collector of a multiple bank unit, a cyclone or a baghouse, outdoor use or indoor use, a single piece of equipment or a complete plant layout, Aircon solutions are as diverse and timely as the needs of the end user.





Aircon has designed, fabricated, and installed bolted collectors since 1976. Diameters range from 8'-0" to 20'-0", with capacities from 8800 to 73,400 cfm.



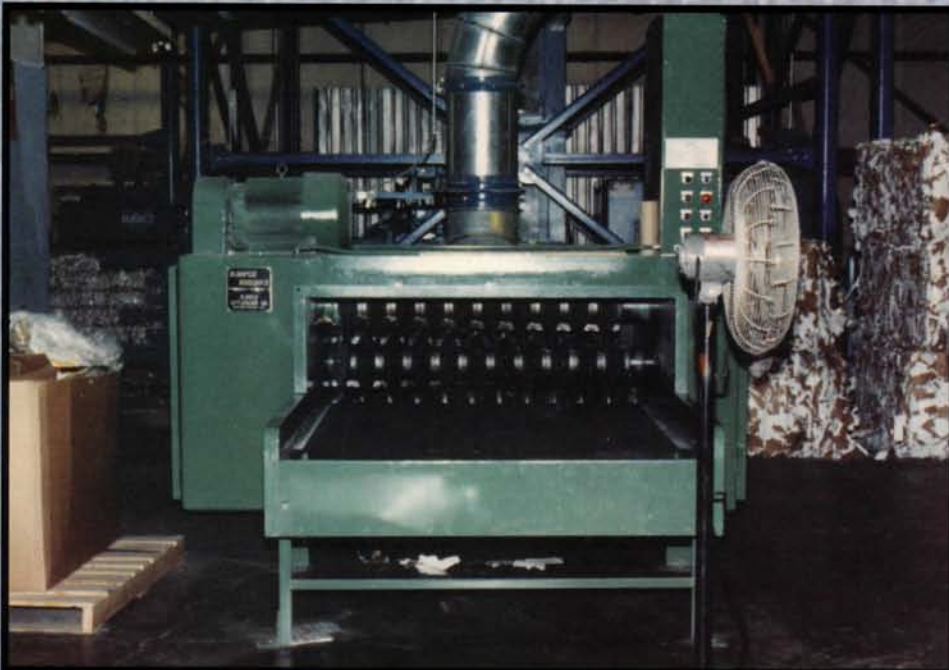
BALERS



From a simple compactor to a high density continuous auto-tie unit.

Aircon Corporation represents a wide range of baler, shredder & hogger manufacturers on a national O.E.M. discount basis.

SHREDDERS & HOGGERS



Shredders:
From small floorsweep shredders to large heavy duty hogger units

BALE ACCUMULATION SYSTEMS



Continuous
Automatic Bale
Accumulation System
Including—

- Scales
- Roller Conveyor
- Printers
- Indicators
- Right Angle Pusher
- Control Panel
- Electronic Sensors
- Inclined Take Off



Why not separate grades before leaving the die-cutter? With Aircon's dual scrap rotary valve, the reversing rotor and internal door toggle assembly allows separation at the machine before entering the below-grade in-trench lines.



For single grades a more compact version is available. Lengths are tailored to fit each machine.



For jobs where clean air is not an option, Aircon heavy-duty material handling blowers are available in inlet sizes from 11" to 23".



1. Ductwork

2. Cyclones & Support Steel

3. Floorsweeps

4. Sequencing systems

5. Blowers

6. Air Veyors

7. Hoods

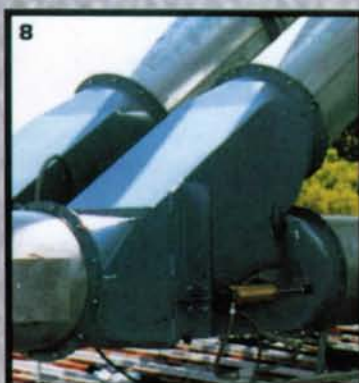
8. Diverter Valves

9. Angle Rings

10. Belt Conveyors

11. Elbows, Breechings

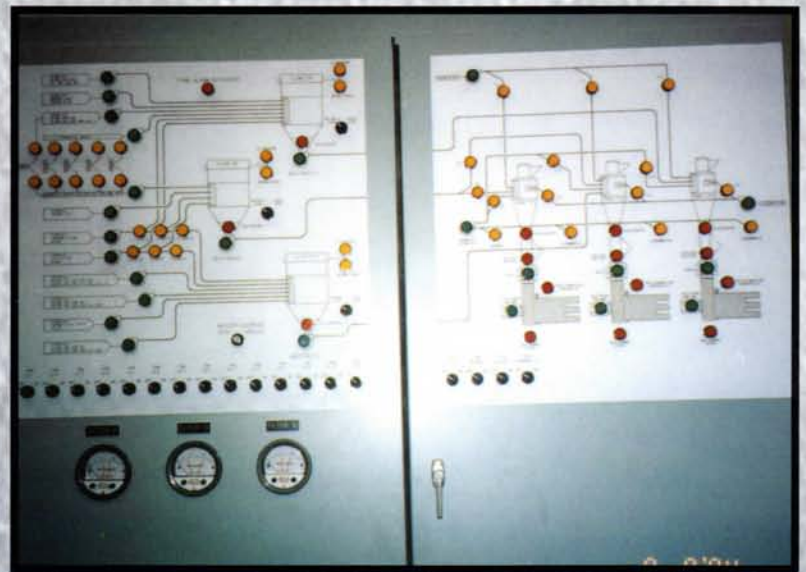
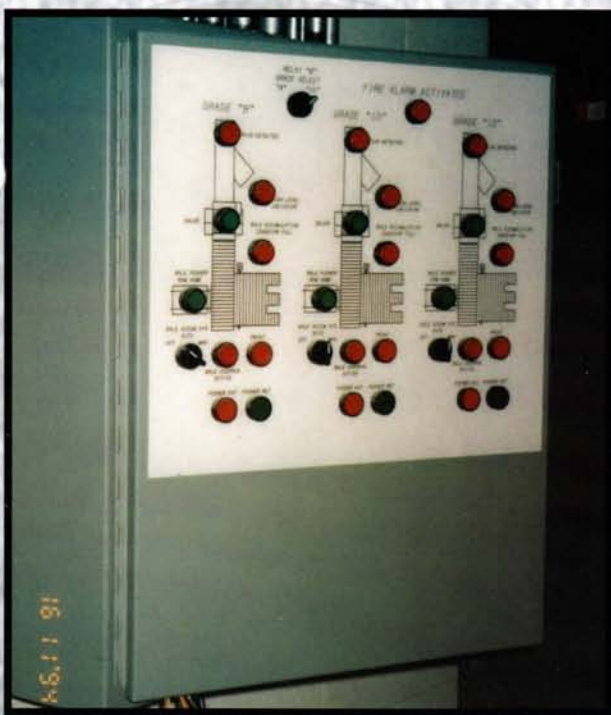
12. Sequencing Valves



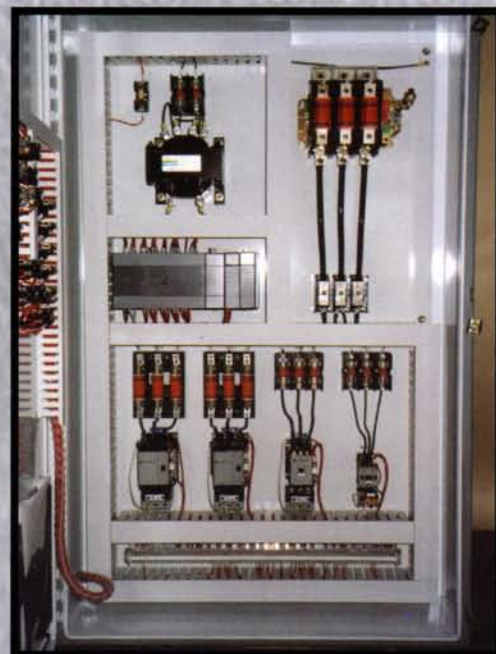


Correctly sized and properly installed blowpipe, elbows, and angle rings draw little attention, but the wages of poor design and workmanship can be hours (or days) of down-time and years of management headaches. All across the nation, Aircon has helped plants become less wasteful, more efficient, cleaner, and safer.





Custom-made programmable logic controller (PLC) enclosures facilitate trouble-shooting and routine maintenance checks. Enclosures can be made to accommodate existing plant layouts or for future expansion.





A.G.I. INC
ACCURATE CORRUGATED BOX COMPANY
ACORN BOX COMPANY
ARCATA GRAPHICS
ARKANSAS CONTAINER
ARROW BOX COMPANY
ATLANTIC COAST CARTON
BANA INC.
BATES CONTAINER
BOISE CASCADE
BOX USA
CALUMET CARTON
CAPITAL CITY CONTAINER
CARTER HOLT HARVEY
CARTON SALES MANUFACTURING CO.
CHIEF CONTAINER
CONCORD SPECIALTY CORPORATION
CONTAINER CORP. OF AMERICA
CORROC INTERNATIONAL
CORRUGATED CONTAINER CORPORATIONS
CUSTOM PACKAGING
DEE PAPER COMPANY
DELTA CONTAINERS
DIXIE REEL & BOX COMPANY
DRY BULK ENGINEERING
DURA CONTAINER COMPANY
ENGLANDER CONTAINER
ETTA PACKAGING
FIELDS CONTAINER CORPORATION
GEORGIA BOX COMPANY
GEORGIA-PACIFIC CORPORATION
GREAT LAKES CORRUGATED
GREAT SOUTHERN INDUSTRIES
GREEN BAY PACKAGING, INC.

GULF STATES PAPER COMPANY
INTERNATIONAL PAPER COMPANY
INTERSTATE CONTAINER
J & J CORRUGATED BOX COMPANY
JEFFERSON SMURFIT CORPORATION
JET CORR PACKAGING
KIMBERLY CLARK CORPORATION
KING BUSINESS FORMS CORPORATION
LAIRD PACKAGING
LAMB AND ASSOCIATES PACKAGING
LETICA CORP.
LEWISBURG CONTAINERS
LIN-PAC CORRUGATED
LONE STAR CONTAINER
MALNOVE INC.
MANUFACTURERS FOLDING CARTON CO.
MANVILLE PACKAGING
MARYLAND CUP CORPORATION
MEBANE PACKAGING
MID-SOUTH PACKAGING
MOORE DATA MANAGEMENT SERVICES
NORTH CAROLINE BOX
OLYMPIC PACKAGING
PACKAGING DIMENSIONS
PACKAGING SERVICES
PACKAGING UNLIMITED
PAPERBOARD INDUSTRIES
PERRY PRINTING
PRECISION PRINTING
PROGRESSIVE PAPER PRODUCTS
PRO-PAK INDUSTRIES
QUEBECOR PRINTING
RIVERWOOD INTERNATIONAL
ROCK TENN COMPANY

RUSKEN PACKAGING
SCHERING-PLOUGH
SEALRIGHT PACKAGING
SIERRA PRESS
SLEVIN SOUTH COMPANY
SOUTH CAROLINA BOX
SOUTHERN DIVERSIFIED
SOUTHERN MISSOURI CONTAINER
SPECIALTY CONTAINER
ST. JOE CONTAINER COMPANY
ST. JOSEPH PACKAGING, INC.
STANDARD REGISTER
STECHER-TRAUNG-SCHMIDT CORP.
STONE CONTAINER CORP.
STRATHMORE PAPER COMPANY
SWEETHEART PRODUCTS GROUP
TARGET CONTAINER
TENNESSEE CORRUGATED CONTAINER
THE COMMERCIAL APPEAL
THOROUGHbred CONTAINERS
TODD & SARGENT
TROPICANA PRODUCTS, INC.
UNION CAMP CORPORATION
UNITED COLOR PRESS
VIKING PAPER COMPANY
VISY PAPER
WALTER G. ANDERSON, INC.
WESTERN KRAFT
WESTERN PUBLISHING
WEYERHAUSER
WILLAMETTE INDUSTRIES
WONDER STATE BOX COMPANY
YORK CONTAINER CORPORATIONS

e-Mail: general@aircon-corporation.com • www.aircon-corporation.com